

# FLUTE 2

commissioned by The Brookline Chorus

## Sh'ma

ANDY VORES

(1995)

### Darkness

$\text{♩} = 60c.$

Musical score for 'Darkness' in 4/4 time. The score consists of three staves. The first staff contains measures 14, 13, G.P., and 2. The second staff starts at measure 31 and contains measures 3, 3, and 7. The third staff starts at measure 46 and contains G.P., 4, 8, and a 5/8 time signature. Circled numbers 1, 2, 3, and 4 indicate specific measures. The piece ends with a double bar line.

attacca

### Oh, Before Doom Overtakes Us

$\text{♩} = 64c.$

Musical score for 'Oh, Before Doom Overtakes Us' in 6/8 time. The score consists of four staves. The first staff contains measures 1-5 with a *mp* dynamic. The second staff starts at measure 7 and contains measures 7-10 with a *mp* dynamic. The third staff starts at measure 11 and contains measures 11-15 with dynamics *mp* and *mf*. The fourth staff starts at measure 24 and contains measures 24-27 with a *mp* dynamic. Circled numbers 5, 6, and 7 indicate specific measures. The piece ends with a double bar line.

# FLUTE 2

30 **7**

*pp*

34

*p*

37

*mp* *f*

39

*mp* *f* **8**

52 **9**

*pp*

60 **10**

*pp* *mp*

71 **11**

*mf* *p* *f*

75 **12**

*mf* *p* **8**

89 **13**

*p* *f* **9**

Violins (pizz.)

# Singing

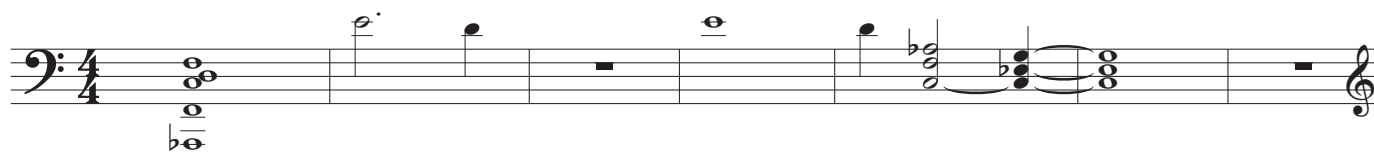
Tacet



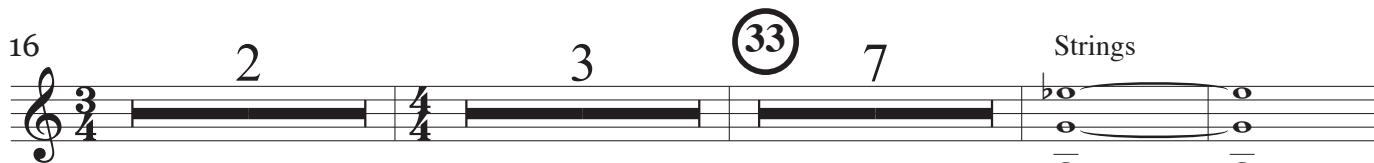
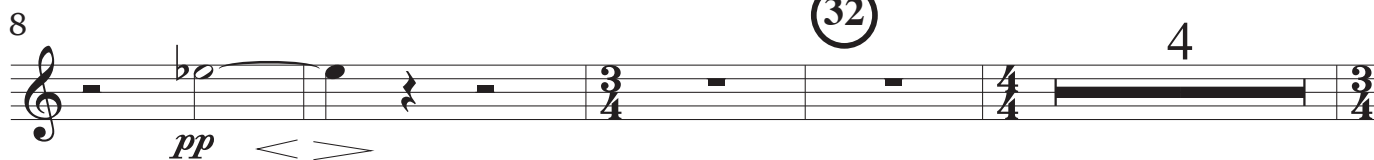
attacca

## How Can I Sing?

♩ = 66c.



Strings

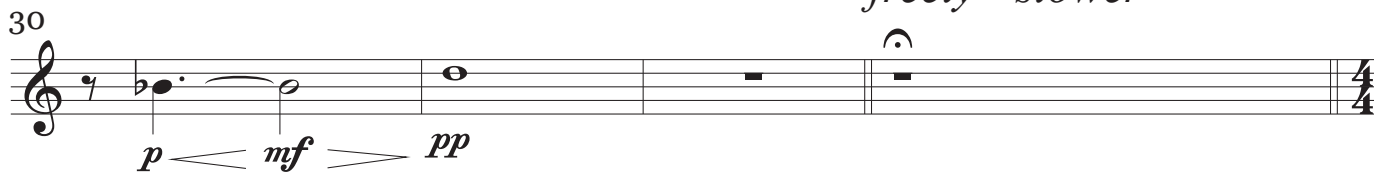


Strings

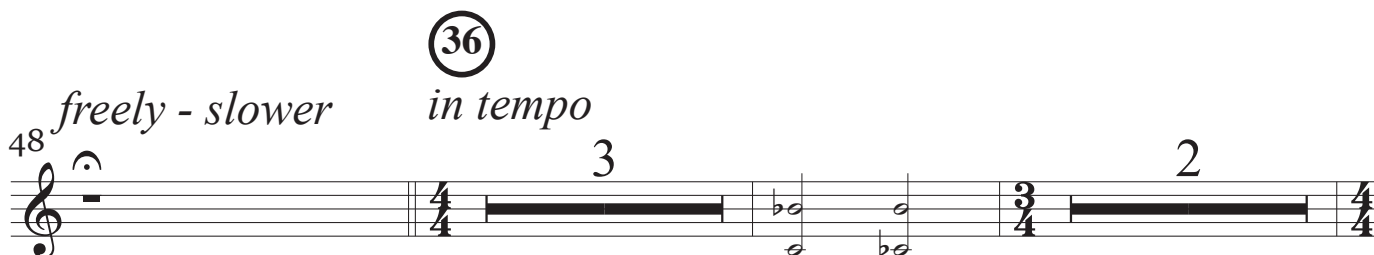


34

*freely - slower*



*in tempo*



*freely - slower*

*in tempo*

Clarinets

# FLUTE 2

55 *fff* *ft.* *fff*

60 *f* *nat.*

64

68 *mf* *senza vib.*

83 *ff* *ff*

97 *mf* *mf*

104 *fff*

111 *mf* *slower*

Clarinets

Strings

121 **(43)** 2

*mp* *pp*

126 2 **(44)**

*f* *f*

132 **(45)** *freely - slower*

*ff*

143

Violins (pizz.) *mp* *f* *ff* *p*

147 **(46)**

*pp* *mf*

# Death Camps and Transit Camps

$\text{♩} = 60c.$

7 (47) 12 (48) 12 (49) 11 (50) 10

53 (51) *accel. al fine*

Bass Drum

62 (52)

Strings *mp cresc.*

68

*ff* *attacca*

# Arrival at the Ramp

$\text{♩} = 144c.$

12 (54) 7 2

25 (55) 9 (56) 10 (57) 2

49 *accel. — faster*

2 2 2

58 **58** 2

Piano + Strings

63

66

Violins

# The Black Stars

♩ = 50c.

Strings

Piano

Tuba

Strings

Tuba

Piano

*sfz*

*sfz*

7

2

(59)

4

*sfz*

Strings

17

(60)

*sfp* < *sfz*

*sfz*

22

3

(61)

3

*sfz*

*sfz*

*fp* < *sfz*

*sfz*

32

3

(62)

*sfz*

*sfz*

*sfz*

41

3

(63)

2

*sfp* < *sfz*

*sfz*

49

2

3

*mp* < *sfz*

*sfp* < *ff*

58

(64)

*sfz*

*mp* < *sfz*

*sfz*

64

(65)

3

*pp* < *sfz*

*pp* < *sfz*

## At the Rim of Heaven

$\text{♩} = 144\text{c.}$

$\text{♩} = 42\text{c.} (\text{♩} = \text{♩})$

19 12 (67)

Violins

35

*pp*

39 (68)

43

47

50 (69)

54

58 (70) 10

73 **(71)** 11 **(72)** 7 **(73)** 4

96 4 3 **(74)** 9

113 4 **(75)** 10 **(76)** 12 **(77)** 14

## The Cry from Warsaw

$\text{♩} = 63\text{c.}$

10 **(78)** 8 **(79)**

Piano + Contrabass

Strings (pizz.)

23 *pp*  $\text{mf}$

29 **(80)** *mf*  $\text{mfpp}$  *mf*

36 2 *poco rit.* — *tempo* 2

43 **(81)**

*mp* *poco* *mf*

45

*poco* *f* *ff* *fp*

*tempo (a little faster)*

48

*pp*

55 **(82)**

*pp* *mp*

60

*mp* *mp* *mp*

63

*mp* *mf* *f*

**(83)**

*pochiss. accel.* \_\_\_\_\_ *tempo (a little faster)*

66

*mp*

82 **(84)**

*mp*

Clarinets

91 **85**  
*ff*

96 **86**  
*più f*

106 *f*

111 **87**

116 *ff*

122 **88** 8 **89** *f*

135 7